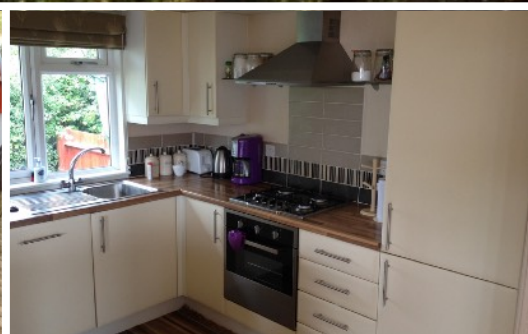


PRIVATE SALES



Bayview

6

Hamell Tarragon 2008 £125,000

38' x 20' - 2 Bedroom

This unit was built specifically for this plot at St Audries Bay. Since purchasing the home the owners have created a wonderful private multi level garden, extended the decking and added a large hot tub! This location has a front row corner position and has commanding views over the water...the sunsets are truly magnificent.

The home has fully integrated appliances, walk-in wardrobe & en-suite shower room from the main bedroom, large twin room with family bathroom and domestic double glazing & central heating.

KEY FEATURES

- Sea view
- Large garden
- Decking
- Double glazing
- Central heating



To find out more please call Richard on 01392 271 222
or 07796 205 379 or email: info@westcountryresorts.co.uk