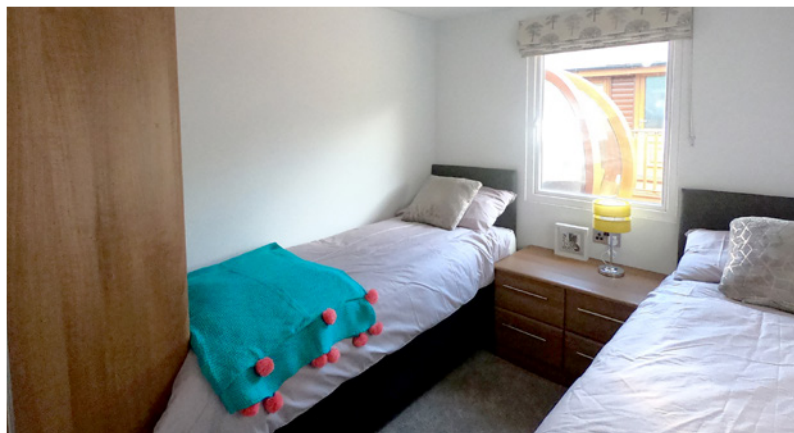


# Hamell Country Lodge

36' x 20' - 2 Bedroom

**£79,995**



# Hamell Country Lodge

36' x 20' - 2 Bedroom

**£79,995**

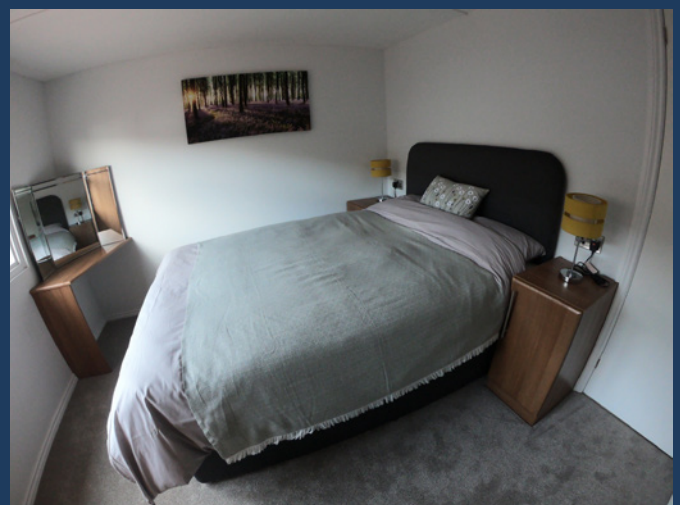
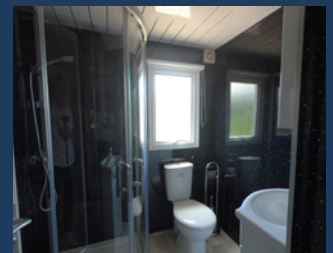
The Hamell Country Lodge has been beautifully refurbished throughout, creating a spacious family retreat. It is located on Bay View 16, a quiet area of the park and has an elevated position with far reaching sea views.

The new designer kitchen has been planned with modern living in mind. The white gloss cabinets are set off with the wooden oak worktop and grey tiles. The space is fully functional and includes a washing machine, dishwasher, wine cooler, fridge freezer, split level double oven and hob. All you need to start enjoying family holidays by the sea. The dining area follows on from the kitchen and features a contemporary glass table and chairs set.

The lounge is light and airy and has lovely big patio doors which open out onto the large decked area. This extends to the side creating an additional large open living space. The lounge furniture creates a relaxing place to enjoy the sea views. The television has been fixed to the wall above the feature flame effect fireplace. The new oak flooring features in the lounge, kitchen and dining room with new carpets in the bedrooms. This lodge has 3 possible bedrooms. It is currently set up with a master bedroom, twin bedroom and study with a daybed. This could be utilised as a third bedroom if required. The family bathroom has a large shower, sink and WC. There is also an additional WC for added convenience. This lodge has a full 25 year license to enjoy.

## KEY FEATURES

- ✓ Far reaching sea views
- ✓ Fully refurbished
- ✓ Central heating
- ✓ Double glazing
- ✓ Low maintenance plot
- ✓ Front opening patio doors
- ✓ Electric feature fireplace
- ✓ 2 seater sofa and 2 arm chairs
- ✓ Appliances included
- ✓ Wall mounted television
- ✓ New lighting throughout



To find out more please call Richard on **01392 271 222** or **07796 205 379** or email: [info@westcountryresorts.co.uk](mailto:info@westcountryresorts.co.uk)

All images used are for illustrative purposes. These and the written description are intended to give a general overview of typical features of the particular model. The actual holiday home offered for sale may differ. Please check with your Sales Adviser in respect of individual holiday homes. All images, photographs and dimensions are not intended to be relied upon for, nor to form part of, any contract unless specifically incorporated in writing into the contract. E&OE