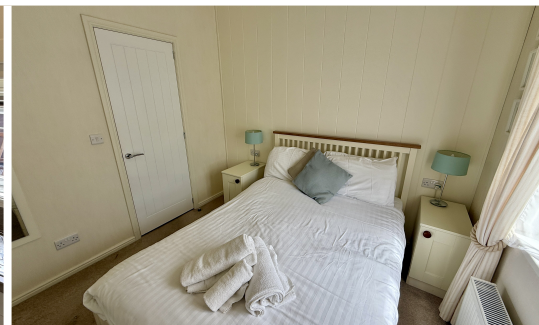


2017 Homeseeker Navigator Lodge

40' x 20' 2 bedrooms

PRIVATE SALE

£95,000



This 2017 Homeseeker Navigator Lodge on Fairways 78 at Finlake Resort and Spa is the perfect countryside retreat. With a large pitch, private parking, and expansive front and side decking, it's designed for relaxing in style. Inside, the open-plan living area is light and spacious, featuring a plush sofa suite, modern furnishings, and double patio doors that open onto the deck—perfect for soaking up the views.

The fully equipped kitchen comes with integrated appliances, a wine cooler, and generous storage, while the dining area with patio access is ideal for family meals or entertaining. With a luxurious master bedroom (complete with walk-in wardrobe and en-suite), a twin room for guests, and a sleek family bathroom, this lodge has everything you need for the perfect home-from-home escape.



Finlake Resort and Spa, Chudleigh

KEY FEATURES

- Residential Specification BS3632
- Large Front & Side Deck
- Central Heating
- Double Glazing
- Countryside Views
- En-suite Shower Room
- All appliances Included
- Incredible Facilities

To find out more please call 01392 271 222
or email: info@westcountryresorts.co.uk

